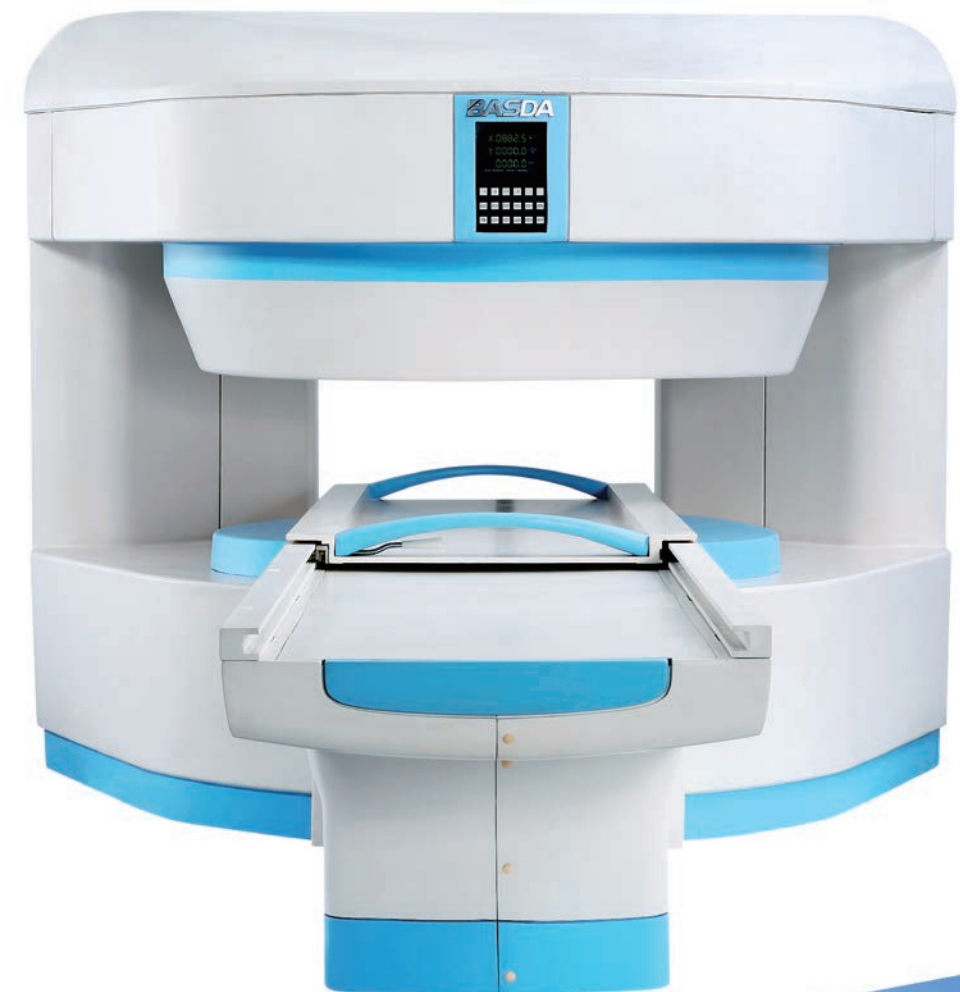


BASDA

BTI-050



SHENZHEN BASDA MEDICAL APPARATUS CO., LTD.

Add: A1402, Tianan Cyber Park Building No.3, Longgang District, Shenzhen, P.R. China

Tel: 0086-755-89686018 Fax: 0086-755-89686918

Http: //www.basda.com.cn E-mail: info@basda.com.cn

Specifications subject to change without notice.

Company profile

Founded in the year of 2000, the headquarters of Shenzhen BASDA Medical Apparatus Co., Ltd., located in Shenzhen, the forward position region of Chinese reforming and opening-up, is a state high-tech medical imaging & radiotherapy devices company who focuses on technology research, development, production and service.

The products of BASDA MEDICAL includes eight series and more than 40 products. They are permanent MRI systems series with magnet field strength goes from 0.20T、0.30T、0.35T、0.42T to 0.50T, superconductive MRI systems series with magnet filed strength goes from 0.5T、0.7T、1.2T、1.5T to 3.0T. CT series with 16 slice, 32 slice and 64 slice. X-ray series like Ceiling suspension DR, U-arm DR, digital fluoroscopy, mobile digital X-Ray, digital mammography, etc. Full digital portable and trolley color Doppler ultrasound series; nuclear medicine series like single-photon emission computed tomography (SPECT), wide FOV gamma camera, etc; medical linear accelerator, BHG-300 gamma ray head stereotactic radiotherapy series; and medical information software. With the high-quality, high-tech and high performance-price-ratio products, so far its markets have covered more than 50 countries and regions, including all domestic provinces, cities & autonomous regions; and Europe, America, Africa, Middle East and Southeast Asia, etc.

BASDA Medical was honored and qualified as "State High-tech Enterprise", "Key Hi-tech Enterprise of State Torch Program", "Guangdong Brand Product", "Shenzhen Hi-tech Enterprise", "Shenzhen Software Enterprise", "Shenzhen Technology Innovation Award", etc., and many technology innovation projects have won national, provincial and municipal support.

BASDA MEDICAL adhere to the exploration spirit of "independent innovation" and the core value of "continuous transcendancy and innovation, customer-first and human-oriented", takes the responsibility of "convoying people's life" with high technology, dedicated to pursuing excellent products and service for customers and becoming the leading & international famous brand in China and the whole world!

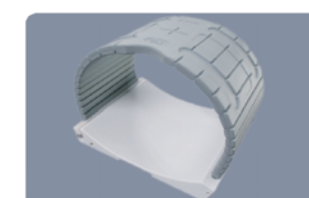


0123

Technology Convoys Your Life

Magnet strength: 0.50T

With 16 years' consistent efforts, cohesion of BASDA people's wisdom, cast a brand-new upgraded open MRI. BASDA software has complete and professional sequences which meet the scanning requirements of different parts and can easily observe high quality images based on her abundant clinical experience. It helps users to master the scanning skills for all parts of the body in shortest time. More powerful hardware performance, improved hardware configuration and optimized scanning sequences, all help to achieve more powerful functions.



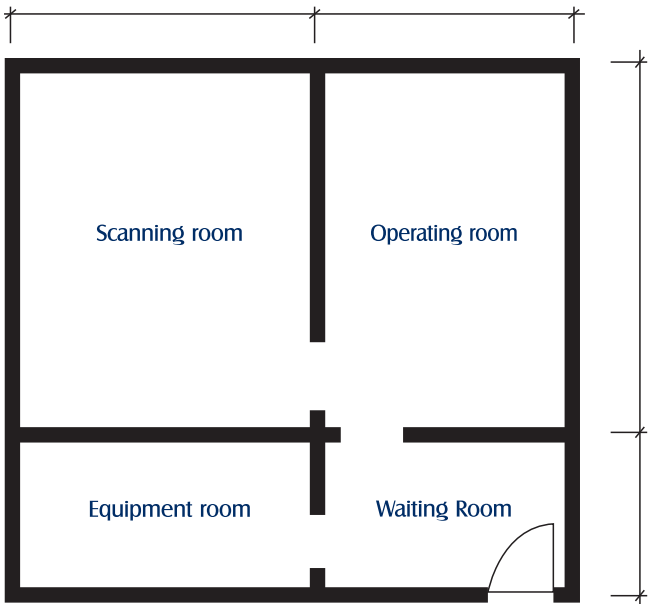


- ◇ Powerful image processing technology, powerful industrial computer (IPC) workstation, very convenient for image shearing, processing and storage, etc.
- ◇ Better reconstruction technology, adopt senior reconstruction technologies like iteration / interpolation, complete the signal data collection and K space filling in extremely short time, gain higher resolution images with much clearer fine structures.
- ◇ Abundant of scanning sequences and imaging technologies based on years of BASDA's experience and indefatigable product improvement.
- ◇ BASDA software has complete and professional sequences which meet the scanning requirements of different parts and can simply gain high quality images based on its rich clinical experience.



- ◇ Independent-developed operation system, doctors can easily and quickly register the patient, browse image, do advanced post-processing, external device connectivity and other functions.
- ◇ Magnet open design with double rear column, in the premise of stable structure, it greatly improves the opening degree, doctors and family members can accompany the patients at multi-angle and zero distance, maximally avoid claustrophobia, provide a platform for interventional therapy.
- ◇ Perfect mid-field MRI system, greatly improved image quality, greatly shortened scanning time. Rich clinical diagnostic imaging sequences, allow the users to obtain the images with highest quality, provide the advanced imaging functions and convenient & powerful image post-processing technology to meet the needs of different customers.
- ◇ High-performance shielding room design, professional construction team, ensure the scanning environment undisturbed from outside, provide excellent scanning and operation environment.

System environment



Recommended room size

Scanning room: 6.0m(L) * 5.0m(W) * 3.0m(H)
Equipment room: > 3m(L) * > 1.5m(W)
Operating room: According to the actual demand
Waiting room: According to the actual demand

Minimum room size

Scanning room: 5.5m(L) * 3.7m(W) * 2.8m(H)
Equipment room: 3m(L) * 1.5m(W)
Operating room: According to the actual demand
Waiting room: According to the actual demand

BASDA show room

