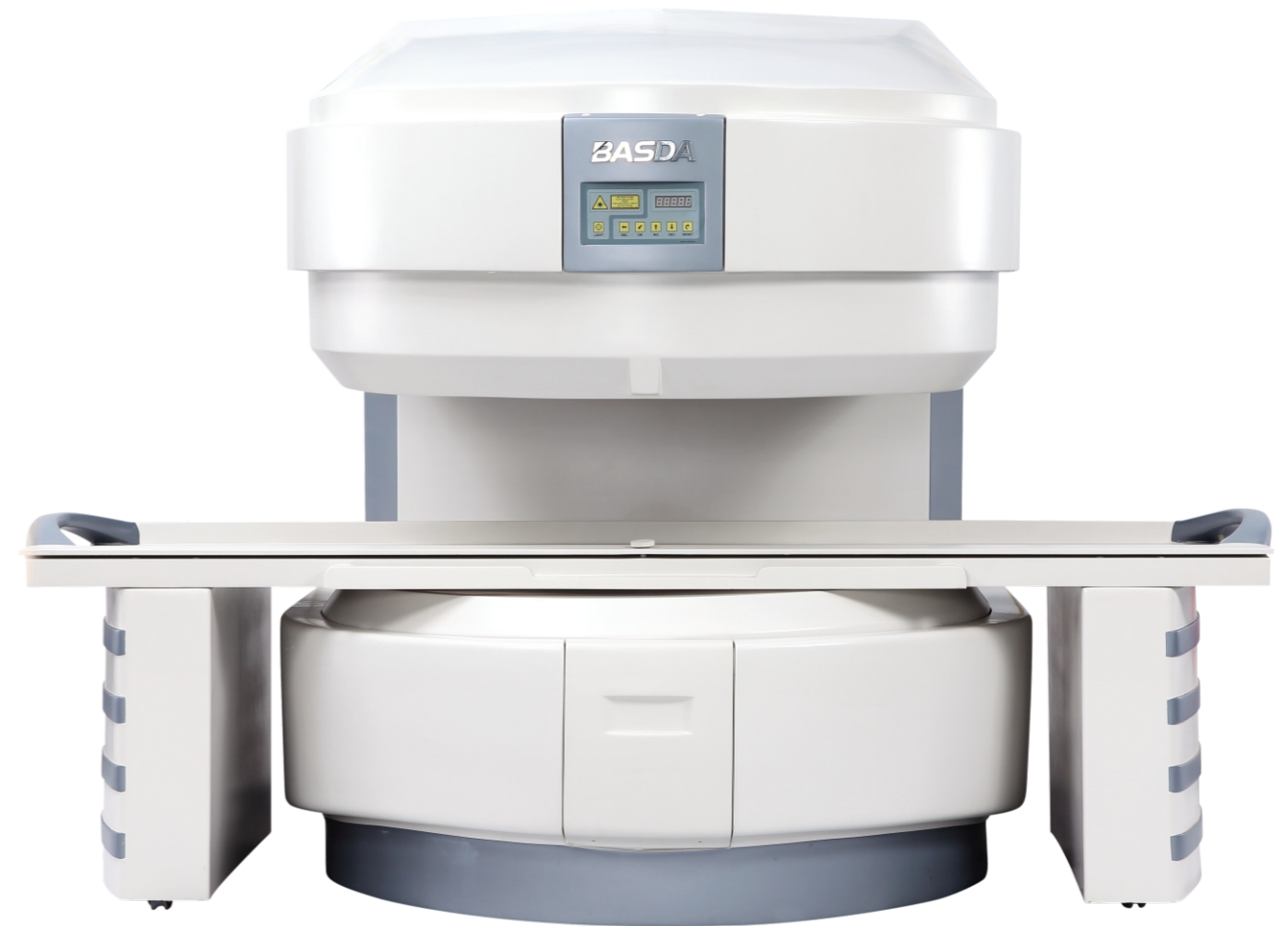


**BASDA**

**BTI-035**



**SHENZHEN BASDA MEDICAL APPARATUS CO., LTD.**

Add: A1402, Tianan Cyber Park Building No.3, Longgang District, Shenzhen, P.R. China

Tel: 0086-755-89686018 Fax: 0086-755-89686918

Http: //www.basda.com.cn E-mail: info@basda.com.cn

Specifications subject to change witho

# Company profile

Founded in the year of 2000, the headquarters of Shenzhen BASDA Medical Apparatus Co., Ltd., located in Shenzhen, the forward position region of Chinese reforming and opening-up, is a state high-tech medical imaging & radiotherapy devices company who focuses on technology research, development, production and service.

The products of BASDA MEDICAL includes eight series and more than 40 products. They are permanent MRI systems series with magnet field strength goes from 0.20T、0.30T、0.35T、0.42T to 0.50T, superconductive MRI systems series with magnet field strength goes from 0.5T、0.7T、1.2T、1.5T to 3.0T. CT series with 16 slice, 32 slice and 64 slice. X-ray series like Ceiling suspension DR, U-arm DR, digital fluoroscopy, mobile digital X-Ray, digital mammography, etc. Full digital portable and trolley color Doppler ultrasound series; nuclear medicine series like single-photon emission computed tomography (SPECT), wide FOV gamma camera, etc; medical linear accelerator, BHG-300 gamma ray head stereotactic radiotherapy series; and medical information software. With the high-quality, high-tech and high performance-price-ratio products, so far its markets have covered more than 50 countries and regions, including all domestic provinces, cities & autonomous regions; and Europe, America, Africa, Middle East and Southeast Asia, etc.

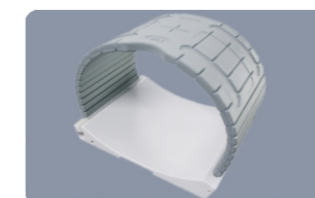
BASDA Medical was honored and qualified as "State High-tech Enterprise", "Key Hi-tech Enterprise of State Torch Program", "Guangdong Brand Product", "Shenzhen Hi-tech Enterprise", "Shenzhen Software Enterprise", "Shenzhen Technology Innovation Award", etc., and many technology innovation projects have won national, provincial and municipal support.

BASDA MEDICAL adhere to the exploration spirit of "independent innovation" and the core value of "continuous transcendancy and innovation, customer-first and human-oriented", takes the responsibility of "conveying people's life" with high technology, dedicated to pursuing excellent products and service for customers and becoming the leading & international famous brand in China and the whole world!



## Magnet strength: 0.35T

With 16 years' consistent efforts, cohesion of BASDA people's wisdom, cast a brand-new upgraded open MRI. BASDA software has complete and professional sequences which meet the scanning requirements of different parts and can easily observe high quality images based on her abundant clinical experience. It helps users to master the scanning skills for all parts of the body in shortest time. More powerful hardware performance, improved hardware configuration and optimized scanning sequences, all help to achieve more powerful functions.

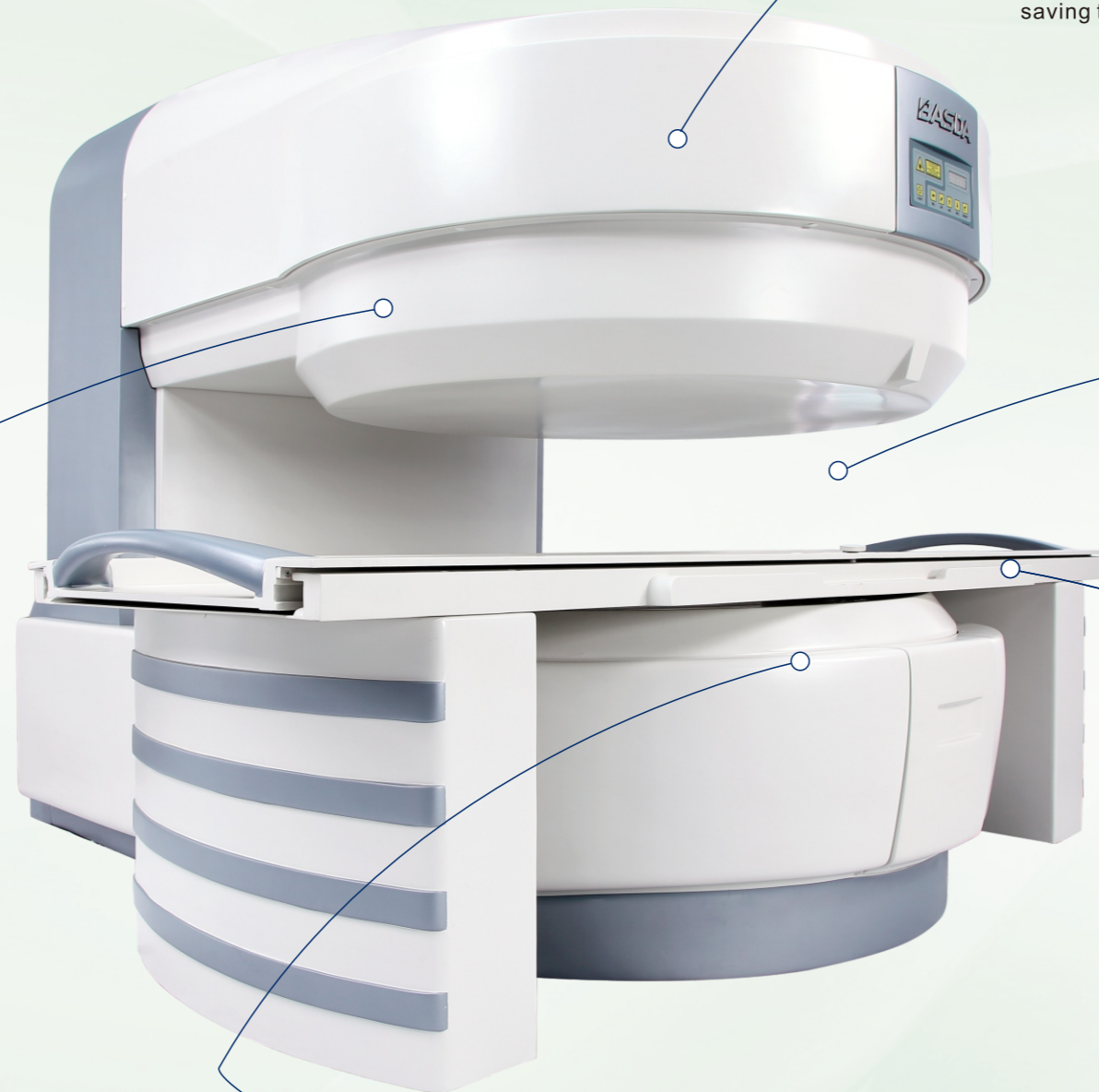


0123

Technology Convoys Your Life



Convenient image storage and transmission. According to users' different needs, the system can save the images in common PC format by one key. Convenient for carrying, data sharing, copy data to CD; or select the DICOM network data transmission or other storage methods to meet the various needs of users at most.



All permanent MRI models come with high precision temperature control system of magnet to guarantee the stability of magnetic field strength, ensure the quality of the images for the long-term stability, saving the cost for users.

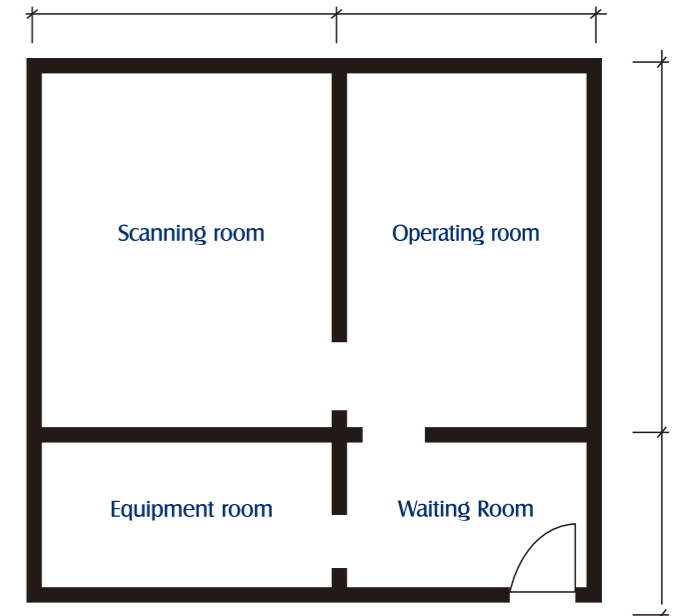
Highly open system, easy for MRI interventional therapy.

Perfect combination of gradient system and high-performance RF amplifier, assure stable system performance and excellent image quality.

Based on humanized and intelligent design, low table position design, convenience for stretchers and disabled patients.

By using the self-shielding gradient coil and high duty ratio gradient amplifier system as well as the eddy current free technology and design, it can not only avoid the eddy current in metal shielding layers, but also gather the eddy current produced by axis X & Y to Z, then intensively erased by software algorithm. This technology helps to improve the space coding ability and image quality.

# System environment



### Recommended room size

- Scanning room: 5.0m(L) \* 4.0m(W) \* 3.0m(H)
- Equipment room: > 3m(L) \* > 1.5m(W)
- Operating room: According to the actual demand
- Waiting room: According to the actual demand

### Minimum room size

- Scanning room: 4.3m(L) \* 3.2m(W) \* 2.8m(H)
- Equipment room: 3m(L) \* 1.5m(W)
- Operating room: According to the actual demand
- Waiting room: According to the actual demand

# BASDA show room

